

International Visitors' Use of Public Transportation and Booking/Payment Services

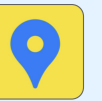
Integrated Transportation Information & Booking Services

Route Search(Driving, Public Transit, Walking)
Place Information(Local Attractions, Restaurants, etc.)

• **NAVER Maps**(EN, CN, JP)
Route Search (Driving, Public Transit, Walking)



• **kakaomap**(EN)
Route Search (Driving, Public Transit, Walking)



Railroad (KorailTalk)



On-Site Purchase

AREX, KTX, SRT
Ticket Machines & Counters

Foreign-issued credit cards accepted

(AREX) Available at standard ticket machines
(KTX) Available at new ticket machines

Online Booking

AREX, KTX, SRT
AREX : www.airportrailroad.com
SRT : etk.srail.kr

Foreign-issued credit cards accepted

(AREX) Website(EN, CN, JP)
(KTX) KorailTalk(7 languages)
Klook(20 languages)
(SRT) App and Website(EN, CN, JP)

Pay upon Boarding

AREX
Card Reader

Foreign-issued credit cards not accepted for tap payment
Use a regular transportation card(Tmoney)



Airport Limousine

On-Site Purchase (Airport → City Center)

Ticket Machines & Counters
Foreign-issued credit cards accepted

Online Information

Incheon International Airport > Transportation/Parking
Incheon International Airport : www.airport.kr
Check Route and Service Information

Pay upon Boarding (City Center → Airport)

AREX
Card Reader

Foreign-issued credit cards not accepted for tap payment
*Available on select buses only (e.g., K Airport Limousine)
Use a regular transportation card(Tmoney)



Subway

On-Site Purchase

Single-Use Ticket
New Ticket Machines for Seoul Subway Lines 1-8
Foreign-issued credit cards accepted

Prepaid Card-Tmoney
Convenience Stores & Subway Station Nationwide
Foreign-issued credit cards not accepted for purchase or top-up
Cash only

(Where to purchase) Convenience stores nationwide(GS25, CU, 7-Eleven, emart24, StoryWay, etc.), Customer Safety Offices at subway stations in the Seoul metropolitan area(Lines 1-4) or i-Centers (Lines 5-8)

Transit Pass-Climate Card(1-7 Days)
New Ticket Machines for Seoul Subway Lines 1-8
Foreign-issued credit cards accepted

Pay upon Boarding

Subway
Card Reader
Use a regular transportation card(Tmoney)



Bus (Klook, Hanpass)



On-Site Purchase

Express-Intercity Bus
Ticket Machines & Counters
Foreign-issued credit cards accepted

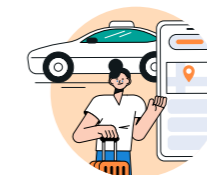
Online Booking

Express Bus
Klook, Hanpass(app-web)
Foreign-issued credit cards accepted

Intercity Bus
Hanpass(app-web)
Foreign-issued credit cards accepted

Pay upon Boarding

Bus
Card Reader
Foreign-issued credit cards not accepted for tap payment
*Available on Jeju city buses only
Use a regular transportation card(Tmoney)



Taxi (k.ride)



Ride-Hailing

Taxi-Hailing Platform
k.ride, Uber Taxi, etc.
Foreign-issued credit cards accepted

Pay upon Boarding

Taxi
Card Reader
Foreign-issued credit cards accepted



Car Rental (LOTTE rent-a-car)



Online Booking

Car Rental
LOTTE rent-a-car : www.lotterentacar.net
SK rent-a-car : www.skdirect.co.kr
Foreign-issued credit cards accepted
*Car rental is not available for travelers from countries not covered by International Driving Permit reciprocity, such as China

Available
Unavailable